



# Product Data Sheet

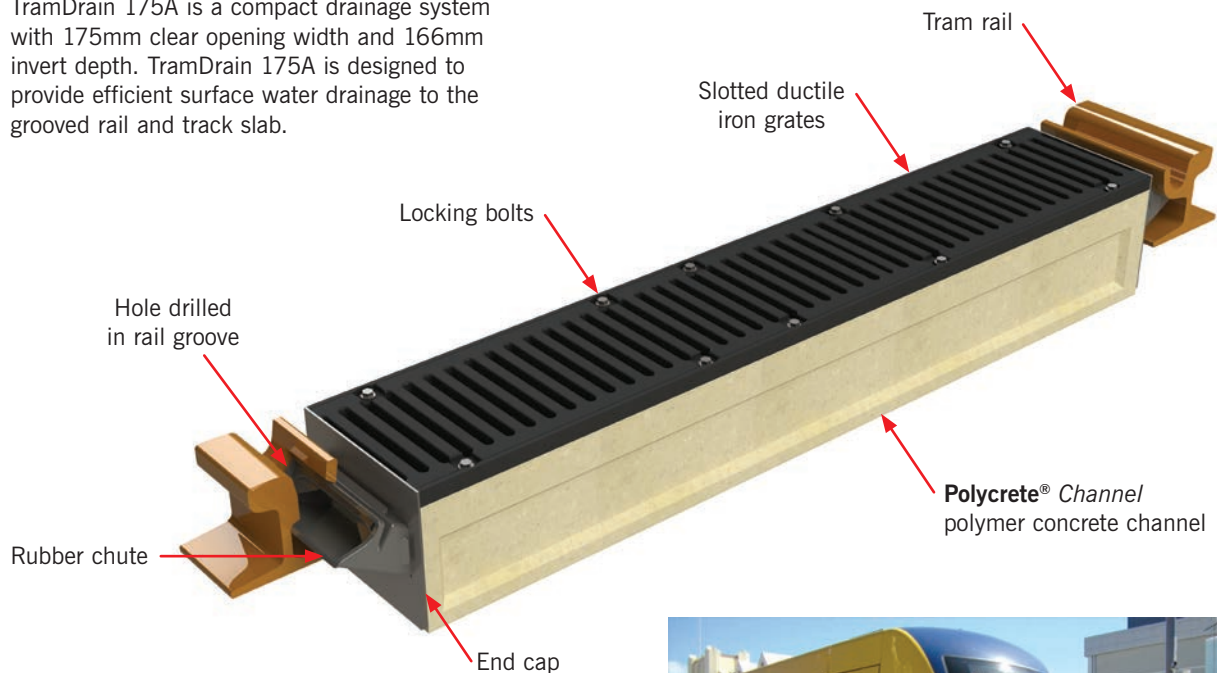
## ACO INFRASTRUCTURE



### TramDrain 175A

Grooved rail and track slab drainage. 191mm overall channel depth.

TramDrain 175A is a compact drainage system with 175mm clear opening width and 166mm invert depth. TramDrain 175A is designed to provide efficient surface water drainage to the grooved rail and track slab.



#### Benefits of the TramDrain 175A System

- Compact drainage system
- Compatible with grooved rail and track slab
- Rubber chute is flexible to suit various tram rail profiles
- Rubber chute isolates TramDrain from stray currents in the tram rail
- Channels manufactured from lightweight polymer concrete
- Channels discharge through vertical outlet

#### TramDrain 175A length and areas of use

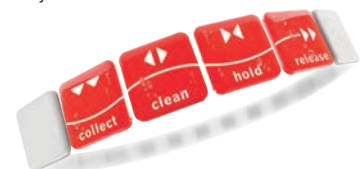
- 1265mm – Standard and intertrack

#### Slotted ductile iron grates

- 15mm wide slots
- Certified to AS3996 Class D (210kN)
- Secured and locked down with bolts



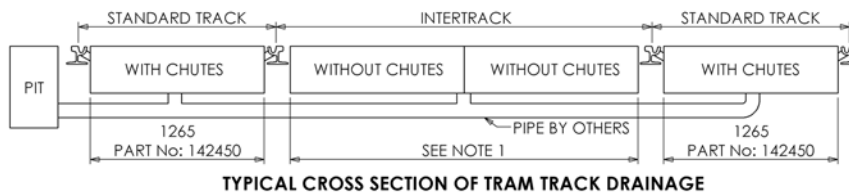
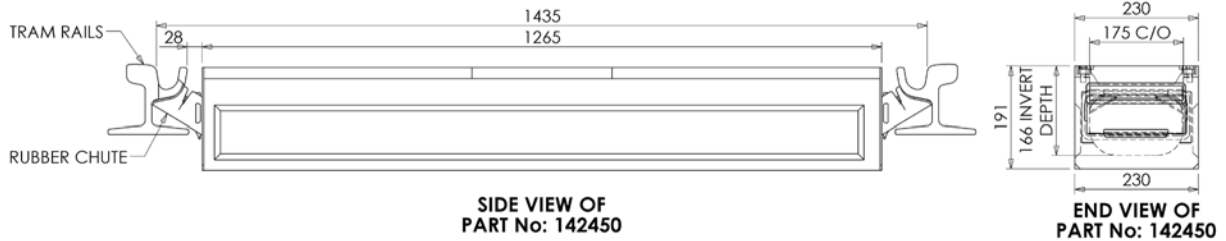
Gold Coast QLD Light Rail Project.



# ACO INFRASTRUCTURE

## TramDrain 175A

Grooved rail and track slab drainage. 191mm overall channel depth.

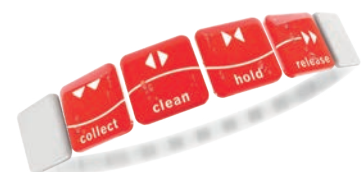


### Parts Table

Part No.	Description	Overall Length (mm)	Overall Width (mm)	Overall Depth (mm)	Invert Depth (mm)	Weight (kg)
<b>TramDrain 175A Complete System</b>						
142450	TramDrain 175A – 1265mm long channel complete with Slotted grates, end caps and rubber chutes	1265	230	191	166	64
<b>TramDrain 175A Channel with Slotted Grates</b>						
142447	TramDrain 175A – 1259mm long channel with Slotted grates	1259	230	191	166	61
<b>TramDrain 175A End Caps</b>						
141297	TramDrain 175A end cap with rubber chute inlet	3	230	191	–	1.2
141298	TramDrain 175A blank end cap	3	230	191	–	1
<b>TramDrain Rubber Chute</b>						
302054	TramDrain rubber chute	–	–	–	–	0.2
<b>TramDrain Universal Junction Pit</b>						
142437	UJP-614 with Slotted grate	500	360	1261	1247	104
142369	UJP-614 with Heelsafe® grate	500	360	1261	1247	106

### Notes:

1. Multiples of 1259mm long channels can be joined to form various lengths and the channels can be cut down to length as required for the 'intertrack' drainage.





# Product Data Sheet

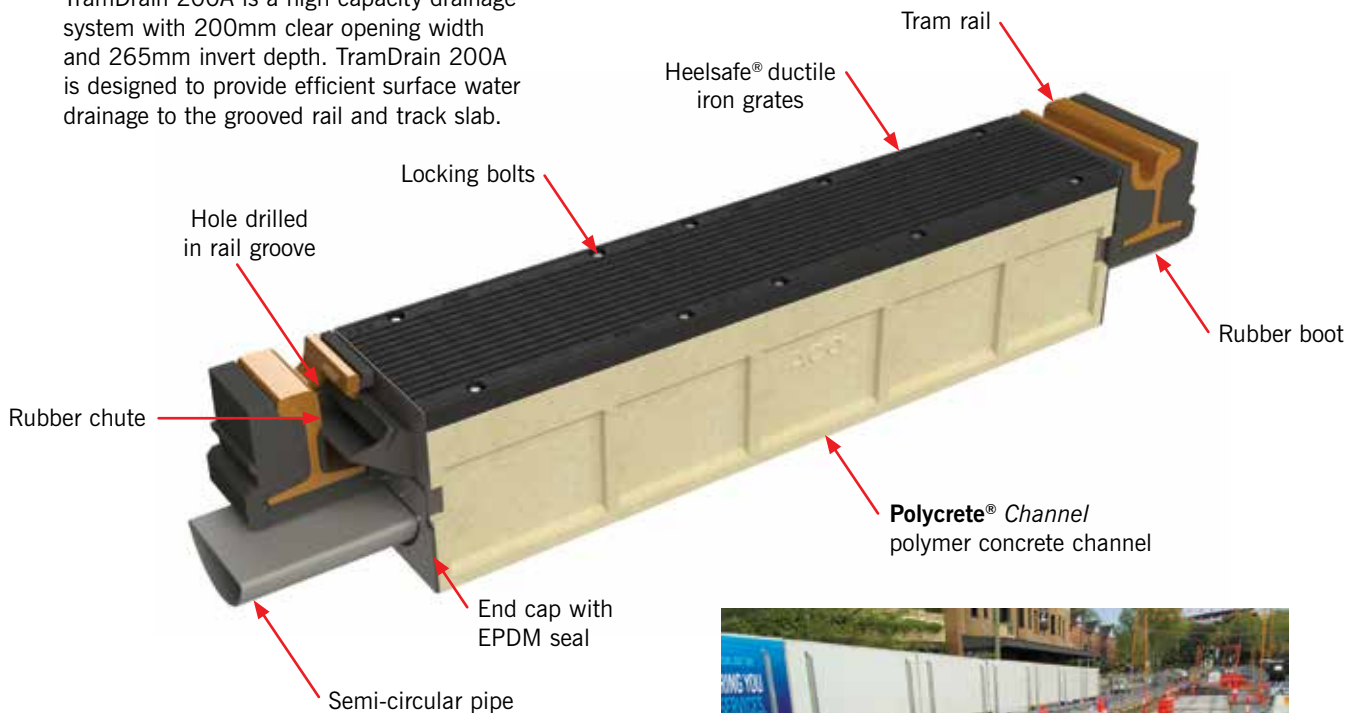
## ACO INFRASTRUCTURE



### TramDrain 200A

Grooved rail and track slab drainage. 290mm overall channel depth.

TramDrain 200A is a high capacity drainage system with 200mm clear opening width and 265mm invert depth. TramDrain 200A is designed to provide efficient surface water drainage to the grooved rail and track slab.



#### Benefits of the TramDrain 200A System

- High capacity drainage system
- Compatible with grooved rail and track slab
- Rubber chute is flexible to suit various tram rail profiles
- Rubber chute and end cap with EPDM seal isolates TramDrain from stray currents in the tram rail
- Channels manufactured from lightweight polymer concrete
- Interconnecting channels discharge through horizontal outlet pipe

#### TramDrain 200A lengths and areas of use

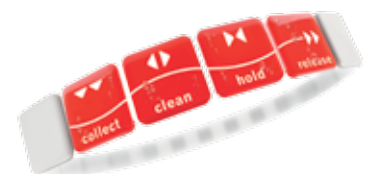
- 1265mm – Standard and intertrack
- 255mm – APS, side and intertrack
- 375mm – APS, side and intertrack
- 460mm – APS, side and intertrack
- 1506mm – Intertrack

#### Heelsafe® ductile iron grates

- Pedestrian friendly with 6.3mm wide slots
- Certified to AS3996 Class D (210kN)
- Secured with locked down bolts



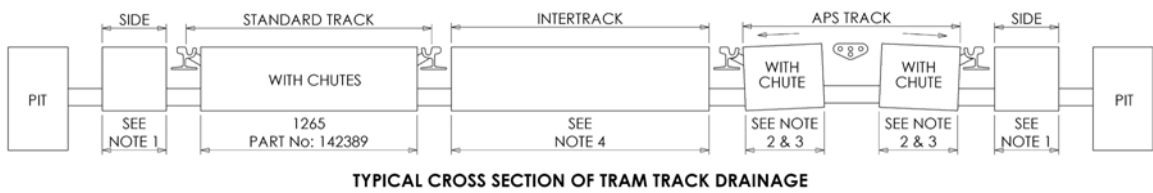
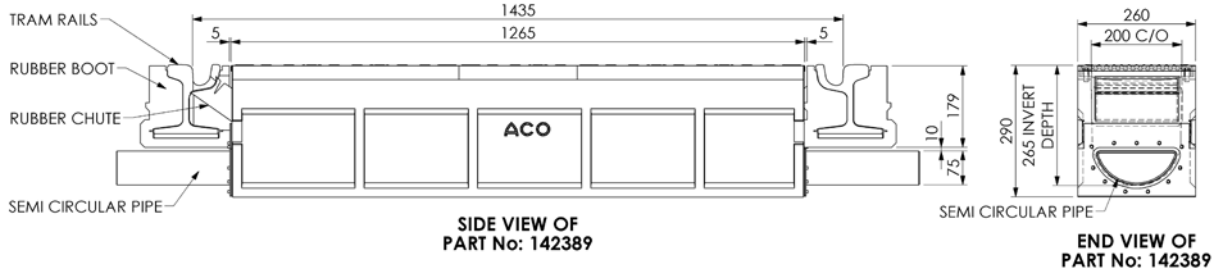
Sydney NSW Light Rail Project.



# ACO INFRASTRUCTURE

## TramDrain 200A

Grooved rail and track slab drainage. 290mm overall channel depth.



Part No. 142378



Part No. 142376



Part No. 142377



Part No. 142379



Part No. 142380



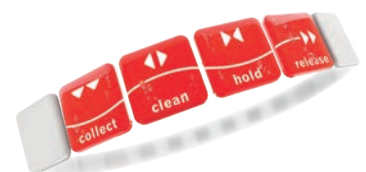
Part No. 142381



Part No. 142382



Part No. 142383



## Parts Table

Part No.	Description	Overall Length (mm)	Overall Width (mm)	Overall Depth (mm)	Invert Depth (mm)	Weight (kg)
<b>TramDrain 200A Complete System</b>						
142389	TramDrain 200A – 1265mm long channel complete with Heelsafe® grates, end caps and rubber chutes	1265	260	290	265	84
<b>TramDrain 200A Channel with Heelsafe® Grates</b>						
142388	TramDrain 200A – 249mm long channel with Heelsafe® grates <sup>2</sup>	249	260	290	265	17
142387	TramDrain 200A – 369mm long channel with Heelsafe® grates <sup>2</sup>	369	260	290	265	25
142386	TramDrain 200A – 454mm long channel with Heelsafe® grates <sup>2</sup>	454	260	290	265	29
142385	TramDrain 200A – 1259mm long channel with Heelsafe® grates	1259	260	290	265	82
142384	TramDrain 200A – 1500mm long channel with Heelsafe® grates	1500	260	290	265	96
<b>TramDrain 200A End Caps</b>						
142376	TramDrain 200A end cap with semi circular outlet	3	260	290	265	1.5
142377	TramDrain 200A end cap with DN100 outlet	3	260	290	265	1.5
142378	TramDrain 200A end cap with rubber chute inlet and semi circular outlet <sup>3</sup>	3	260	290	265	1.5
142379	TramDrain 200A blank end cap	1.5	260	290	–	1
<b>TramDrain Rubber Chute</b>						
302054	TramDrain rubber chute <sup>3</sup>	–	–	–	–	0.2
<b>TramDrain 200A Pipes &amp; Connectors</b>						
142380	TramDrain 200A semi circular pipe – 280mm long	280	178	75	–	0.5
142381	TramDrain 200A semi circular pipe – 1000mm long	1000	178	75	–	1.7
142382	TramDrain 200A semi circular pipe to semi circular pipe connector	280 <sup>5</sup>	186	83	–	0.5
142383	TramDrain 200A semi circular pipe to DN100 pipe connector	280 <sup>5</sup>	186	118	–	0.5
<b>TramDrain Universal Junction Pit</b>						
142369	UJP-614 with Heelsafe® grate	500	360	1261	1247	106

### Notes:

- 249mm, 369mm and 454mm channel lengths can be used for 'side' drainage.
- 249mm, 369mm and 454mm channel lengths can be used in the 'APS track' drainage.
- For 'APS track' grooved rail drainage, order end cap with rubber chute inlet and semi circular outlet (Part No. 142378) and rubber chute (Part No. 302054).
- Any combination of 249mm, 369mm, 454mm, 1259mm and 1500mm channels can be joined to form various lengths as required for the 'intertrack' drainage.
- Pipe connector has 50mm sockets on each end. Effective length of pipe connector is 180mm.





# Product Data Sheet

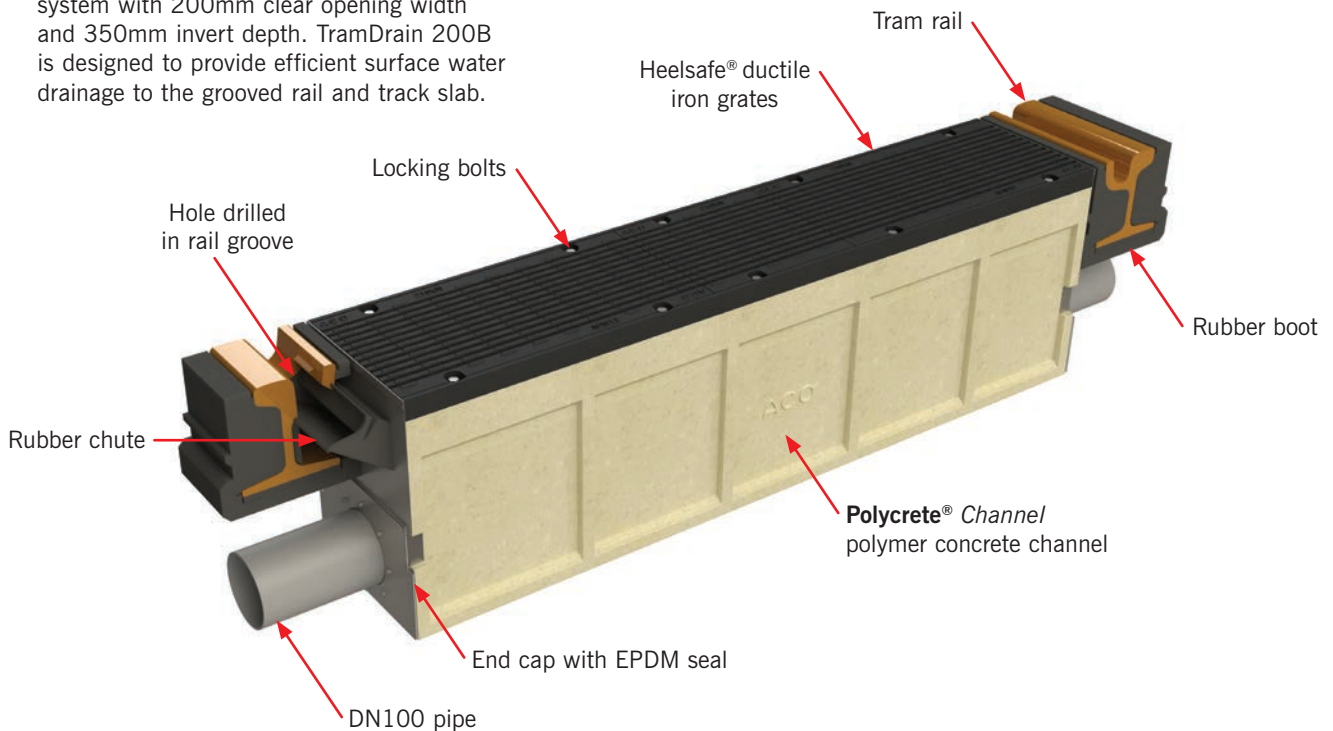
ACO INFRASTRUCTURE



## TramDrain 200B

Grooved rail and track slab drainage. 375mm overall channel depth.

TramDrain 200B is a high capacity drainage system with 200mm clear opening width and 350mm invert depth. TramDrain 200B is designed to provide efficient surface water drainage to the grooved rail and track slab.



### Benefits of the TramDrain 200B System

- High capacity drainage system
- Compatible with grooved rail and track slab
- Rubber chute is flexible to suit various tram rail profiles
- Rubber chute and end cap with EPDM seal isolates TramDrain from stray currents in the tram rail
- Channels manufactured from lightweight polymer concrete
- Interconnecting channels discharge through horizontal outlet pipe

### TramDrain 200B lengths and areas of use

- 1265mm – Standard and intertrack
- 375mm – APS, side and intertrack
- 460mm – APS, side and intertrack
- 1506mm – Intertrack

### Heelsafe® ductile iron grates

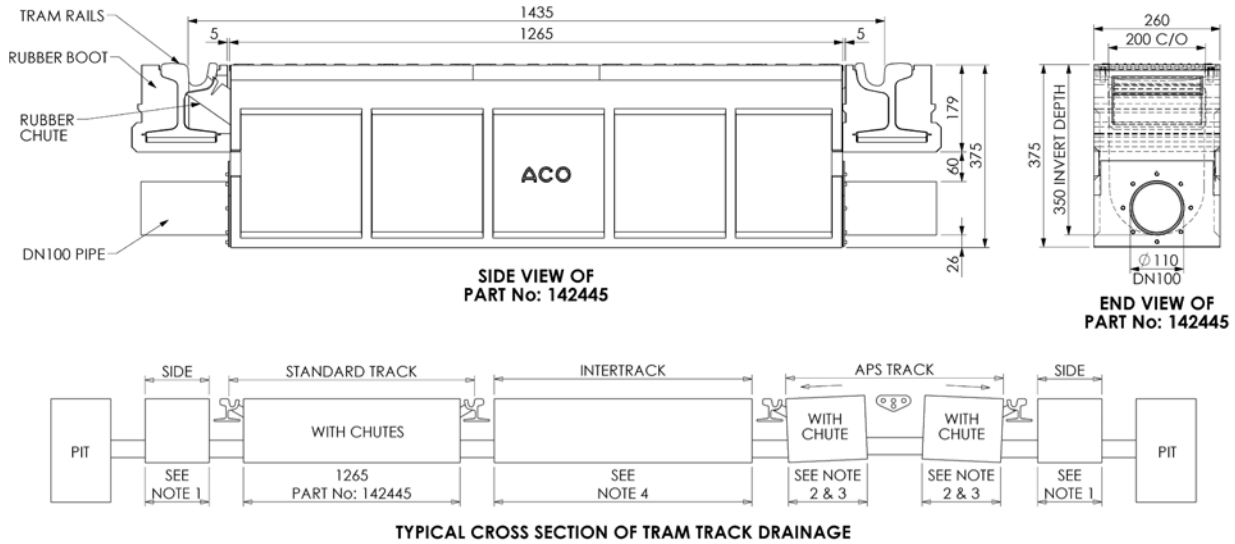
- Pedestrian friendly with 6.3mm wide slots
- Certified to AS3996 Class D (210kN)
- Secured with locked down bolts



# ACO INFRASTRUCTURE

## TramDrain 200B

Grooved rail and track slab drainage. 375mm overall channel depth.



### Parts Table

Part No.	Description	Overall Length (mm)	Overall Width (mm)	Overall Depth (mm)	Invert Depth (mm)	Weight (kg)
<b>TramDrain 200B Complete System</b>						
142445	TramDrain 200B – 1265mm long channel complete with Heelsafe® grates, end caps and rubber chutes	1265	260	375	350	91
<b>TramDrain 200B Channel with Heelsafe® Grates</b>						
142441	TramDrain 200B – 369mm long channel with Heelsafe® grates <sup>2</sup>	369	260	375	350	27
142440	TramDrain 200B – 454mm long channel with Heelsafe® grates <sup>2</sup>	454	260	375	350	33
142439	TramDrain 200B – 1259mm long channel with Heelsafe® grates	1259	260	375	350	88
142438	TramDrain 200B – 1500mm long channel with Heelsafe® grates	1500	260	375	350	105
<b>TramDrain 200B End Caps</b>						
142442	TramDrain 200B End cap with DN100 outlet	3	260	375	350	1.7
142443	TramDrain 200B End cap with rubber chute inlet and DN100 outlet <sup>3</sup>	3	260	375	350	1.7
142444	TramDrain 200B Blank end cap	1.5	260	375	–	1.2
<b>TramDrain Rubber Chute</b>						
302054	TramDrain rubber chute <sup>3</sup>	–	–	–	–	0.2
<b>TramDrain Universal Junction Pit</b>						
142369	UJP-614 with Heelsafe® grate	500	360	1261	1247	106

#### Notes:

- 369mm and 454mm channel lengths can be used for 'side' drainage.
- 369mm and 454mm channel lengths can be used in the 'APS track' drainage.
- For 'APS track' grooved rail drainage, order end cap with rubber chute inlet and DN100 outlet (Part No. 142443) and rubber chute (Part No. 302054).
- Any combination of 369mm, 454mm, 1259mm and 1500mm channels can be joined to form various lengths as required for the 'intertrack' drainage.

