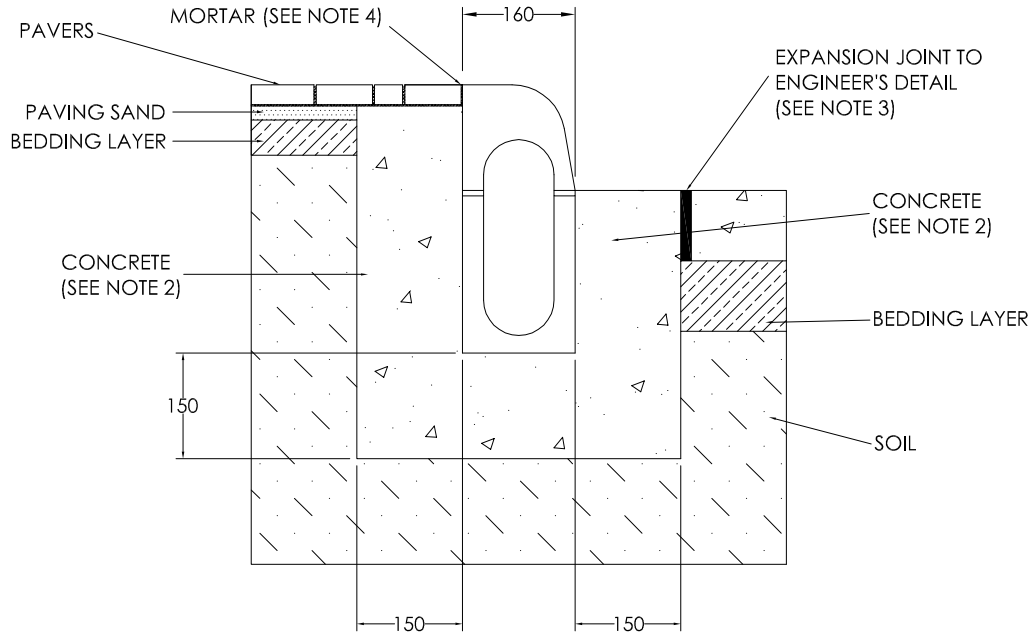


<b>ACO INFRASTRUCTURE</b> DRWG# XIQ1-DC www.acoaus.com.au	<b>INSTALLATION DRAWING</b> <b>QK100 KerbDrain Load Class D: Concrete</b>	ACO Polycrete Pty Ltd 134-140 Old Bathurst Road Emu Plains NSW 2750 Tel: +61 2 4747 4000 Fax: +61 2 4747 4060 e: technical@acoaus.com.au



**NOTES:**

1. Specific site conditions may require an increase in these dimensions or reinforcement. It is the customer's responsibility to ensure the concrete encasement is designed for the application. *Engineering advice may be required.*
2. A minimum concrete strength of 25MPa is recommended. The concrete should be vibrated to eliminate air pockets.
3. Expansion and crack control joints are recommended to protect the channel and the concrete surround. *Engineering advice may be required.*
4. The pavers must be installed flush with the top of the channel edge and be fully bonded to the concrete surround.
5. Refer to ACO's latest installation instructions for complete details.

<b>ACO INFRASTRUCTURE</b> DRWG# XIQ1-DC www.acoaus.com.au	<b>SPECIFICATION CLAUSE</b> <b>QK100 KerbDrain System</b>	ACO Polycrete Pty Ltd 134-140 Old Bathurst Road Emu Plains NSW 2750 Tel: +61 2 4747 4000 Fax: +61 2 4747 4060 e: technical@acoaus.com.au

The trench drainage system shall be ACO's **KerbDrain QK100** system as manufactured by ACO Polycrete Pty Ltd.

ACO's **KerbDrain QK100** polymer concrete channel is a monolithic one piece channel with no removable parts with a standard 150mm kerb height.

The constant depth system shall be complete with large, drainage inlet slots (57mm wide x 107mm high) to reduce blockage with a barrier kerb profile.

ACO's **KerbDrain QK100** channels shall be connected to **QK100** pits or **QK100** access units.

**QK100** access units and/or **QK100** pits are to be positioned at the ends of the drain and at intermediate intervals to allow access through a removable lid for the effective cleaning and maintenance of the drain during service.

**QK100** drop kerbs and centre kerbs to be located at level access areas for pedestrians and vehicles.

All materials and components within the scope of this system shall be obtained from this manufacturer and the work shall be carried out as specified on the drawings.

The system shall be installed in accordance with the manufacturer's printed instructions.